

**BIXOLON®**

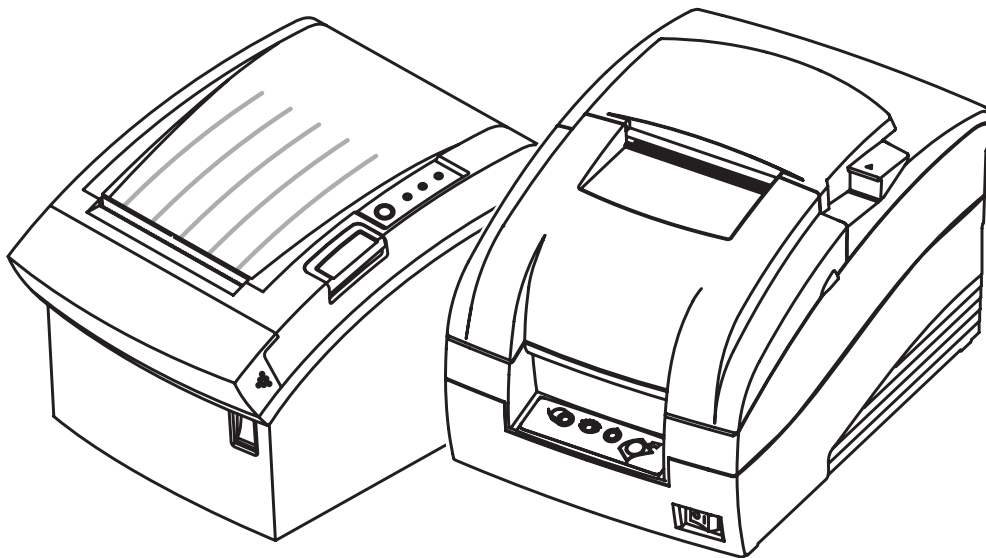
SAMSUNG mini printers

# Software Manual NV Image Tool

---

**Rev. 2.03**

**STP-103 / STP-131  
SRP-275 / SRP-350  
SRP-350N /SRP-350plus  
SRP-350plusF  
SRP-352plus  
SRP-370 / SRP-372  
SRP-500 / SRP-770**



<http://www.samsungminiprinters.com>

## ■ Table of Contents

<b>1. Manual Information.....</b>	<b>3</b>
<b>2. Usage Environment .....</b>	<b>3</b>
2-1 Operating System .....	3
2-2 Device Property .....	3
<b>3. Ready to NV Image Tool .....</b>	<b>4</b>
<b>4. Usage of NV Image Tool .....</b>	<b>4</b>
4-1 The beginning of NV Image Tool.....	4
4-2 Communication Configuration .....	5
4-3 Image List Management .....	6
4-4 Change the Color.....	7
4-5 Download the image .....	7
4-5-1 Download the mono image in thermal printer .....	8
4-5-2 Download the image in dot printer .....	8
4-5-3 Download the color image in thermal printer .....	9
4-6 Save Print File .....	9
4-7 Print the image .....	10
4-7-1 Print the mono image in thermal printer.....	10
4-7-2 Print the image in dot printer .....	11
4-7-3 Print the color image in thermal printer.....	11
<b>Appendix A. Release History .....</b>	<b>12</b>

## 1. Manual Information

The purpose of this manual is to provide information on the operation and usage instructions of the NV Image Tool for the BIXOLON Printers.

This program helps you to download user-defined images to the flash memory in the printer and to recall and print those images with fast speed.

## 2. Usage Environment

### 2-1 Operating System

Following operating systems are supported for usage.

Microsoft Windows 98  
Microsoft Windows ME  
Microsoft Windows 2000  
Microsoft Windows XP  
Microsoft Windows 2003 Server  
Microsoft Windows Embedded For Point Of Service  
Microsoft Windows Vista

### 2-2 Device Property

Use of this Utility is supported on the following property.

Model	Serial	Parallel	USB	Ethernet	Download Image Count	Color mode
STP-103	O	O	X	X	255	Mono
STP-131	O	O	X	X	255	Mono
SRP-275	O	O	O	O	255 / 10	Mono / Color
SRP-350	O	O	O	O	255	Mono
SRP-350N	O	O	O	O	255	Mono
SRP-350plus	O	O	O	O	255	Mono / Color
SRP-350plusF	O	X	X	X	255	Mono / Color
SRP-352plus	O	O	O	O	255	Mono / Color
SRP-370	O	O	O	O	255	Mono / Color
SRP-372	O	O	O	O	255	Mono / Color
SRP-500	O	O	O	O	255 / 10	Mono / Color
SRP-770	O	O	O	O	255	Mono

O: Supported

X: Unsupported

## 3. Ready to NV Image Tool

NV Image Tool is included in the enclosed CD, and can also be downloaded from the BIXOLON website.

([www.samsungminiprinters.com](http://www.samsungminiprinters.com))

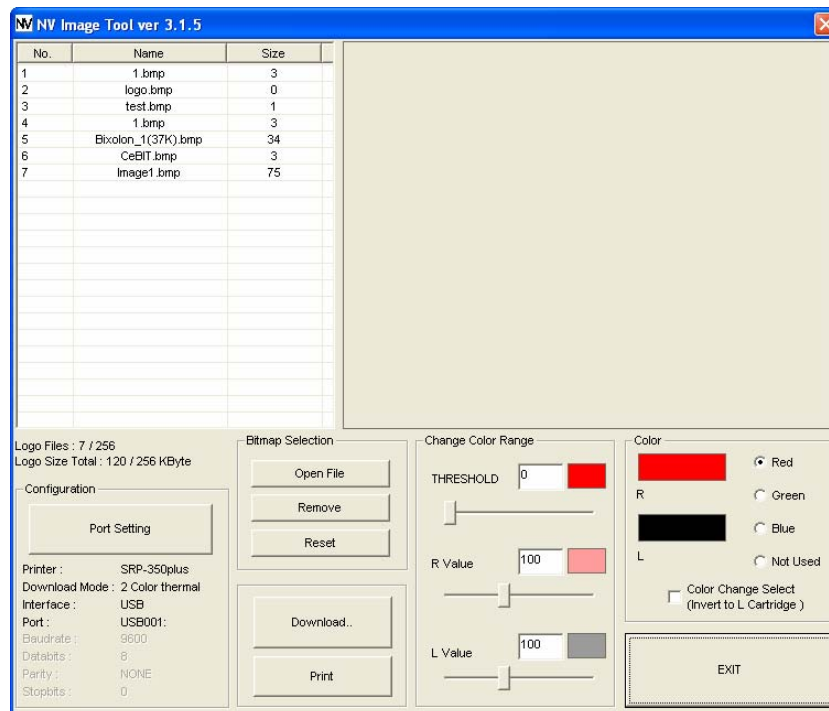
The Name of Execute File is “NV Image Tool(Ver3.x.x).exe”.

## 4. Usage of NV Image Tool

### 4-1 The beginning of NV Image Tool

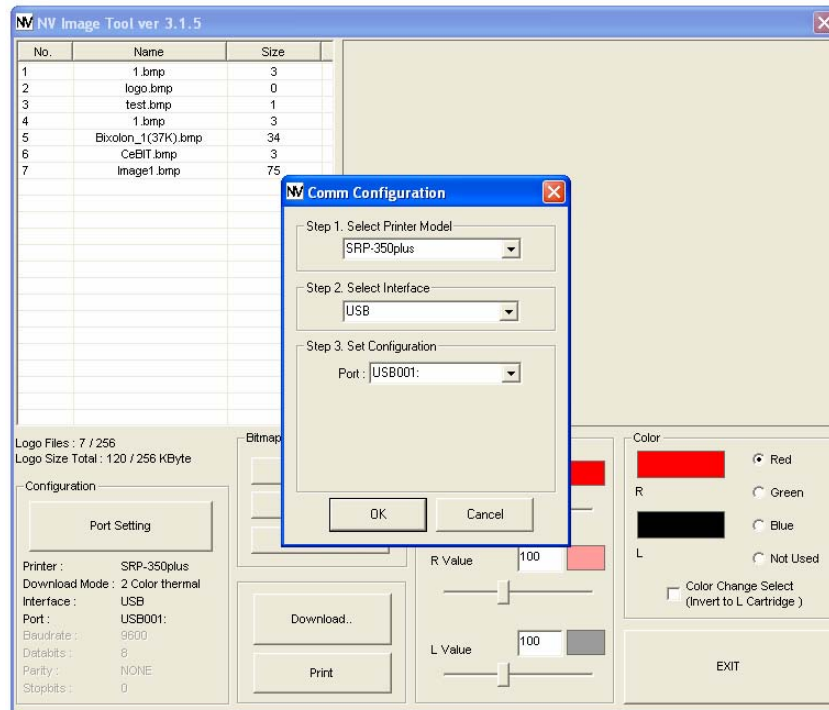
1) Run the “NV Image Tool(Ver3.x.x) file.

2) Upon initiation of the program, the following main window will be appeared.

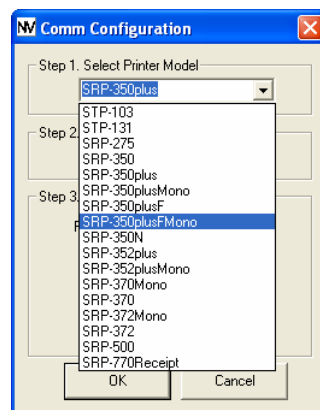


## 4-2 Communication Configuration

1) Click “Port Setting” button to set communication configuration.

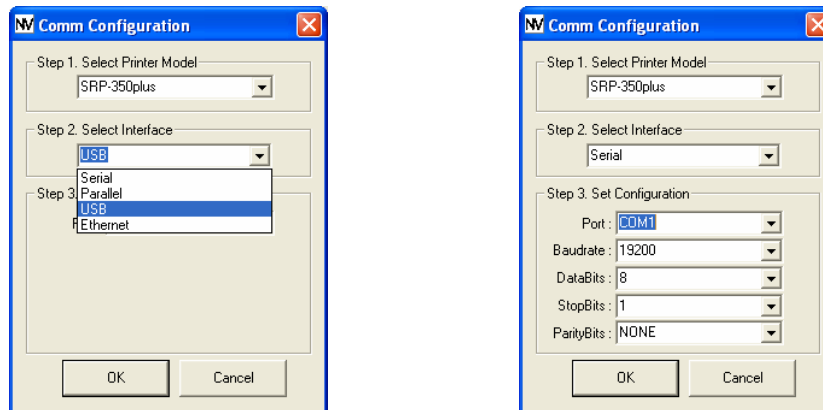


2) Select the Printer model. If the Printer is supported two-color mode, mono or two-color mode can be selected.



- \* The choice of Mono / two-color mode is applied in SRP-350plus, SRP-350plusF, SRP-352plus, SRP-370 and SRP-372 printer model. According to the choice of mode, the command of sending image data is distinguished.
- \* SRP-275 and SRP-500 printer models that are supported two-color mode are no need to choose it.

- 3) Each printer model has different communication interface. Set the port and the communication configuration that corresponds to the printer.

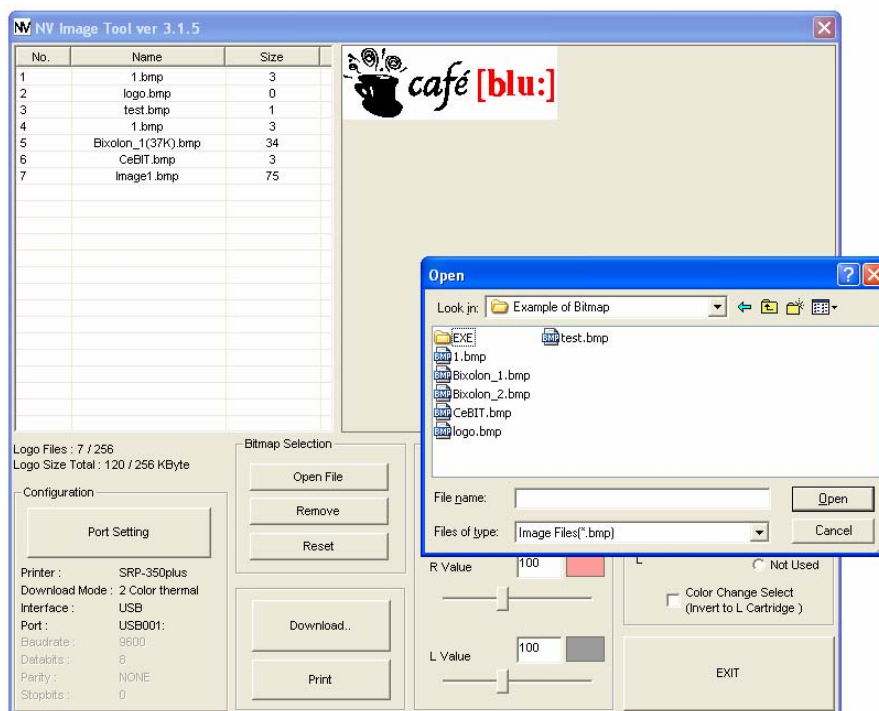


\* In the Serial Interface, match the communication setting (COM port number and Baudrate) to those of the printer.

- 4) After selecting the configuration press “OK” button to complete the communication configuration setting, and press “Cancel” button to cancel the configuration selected.

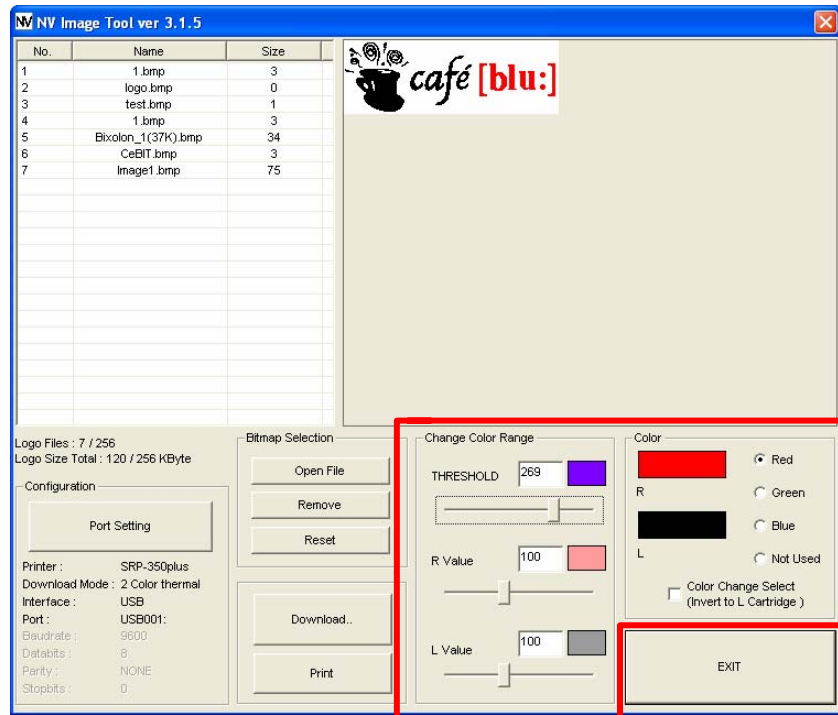
## 4-3 Image List Management

The images can be opened / added, deleted in the Image list box using three buttons in Bitmap selection. Only **bmp** type of image is available to download.



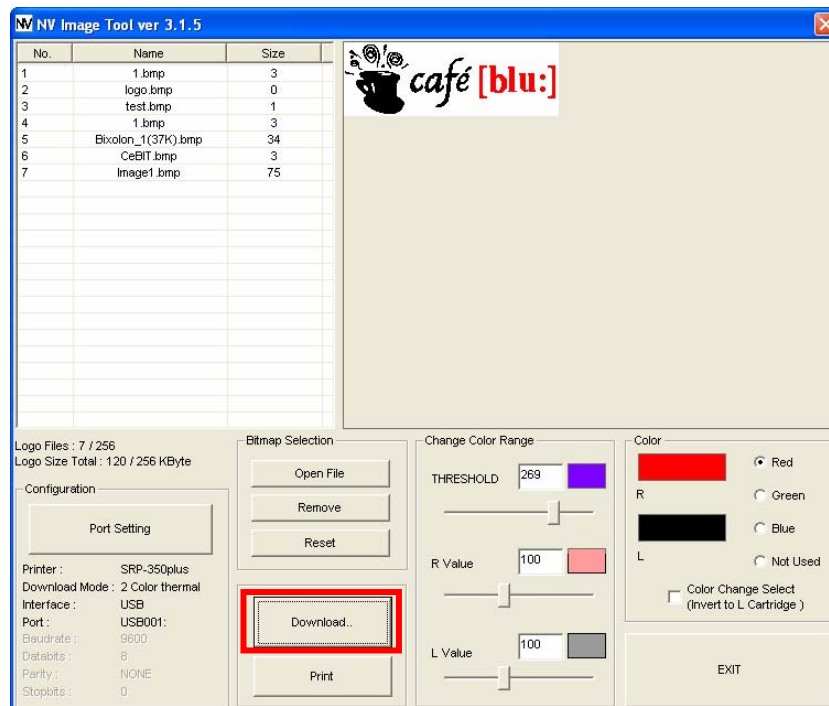
## 4-4 Change the Color

The color of image can be modified, when you use two color printers. Just try to move the horizontal scroll bar as you can see in the picture.



## 4-5 Download the image

When the "Download.." button is clicked, pop-up window and the steps are different based on printer model.

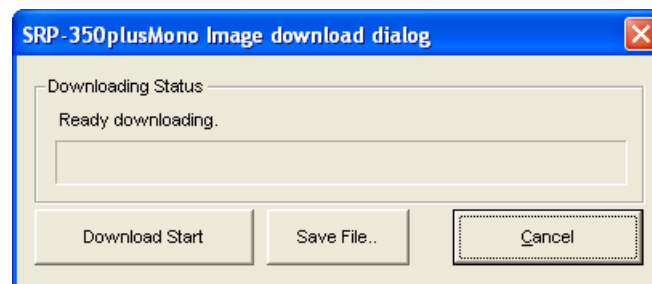


### 4-5-1 Download the mono image in thermal printer

\* In the printer selection section of paragraph 4.2, when selecting between the STP-103, STP-131, SRP-350, SRP-350N, SRP-350plus Mono, SRP-350plusF Mono, SRP-352plus Mono, SRP-370 Mono, SRP-372 Mono, the Mono image download mode is entered.

\* Mono image download command uses the macro command "FS q".  
For further details, please refer to the commands manual of the corresponding model.

After all images stored on the corresponding printer are deleted, the image matching the selected resolution level is downloaded. The image is assigned a number according to the image list displayed on the screen.

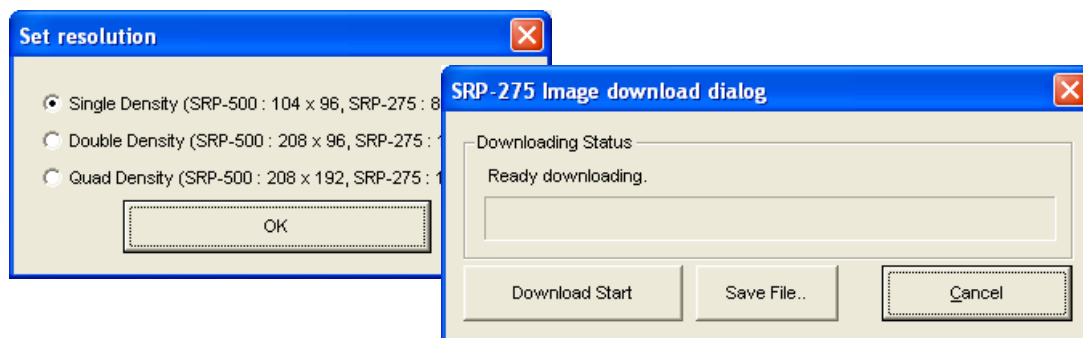


### 4-5-2 Download the image in dot printer

\* In the printer selection section of paragraph 4.2, when selecting between the SRP-275 and SRP-500, the Dot Printer image download mode is entered.

\* The Dot Printer image download command uses the macro command "ESC g" and the bit image command "ESC \*". For further details, please refer to the commands manual of the corresponding model.

After all images stored on the corresponding printer are deleted, the image matching the selected resolution level is downloaded. The image is assigned a number according to the image list displayed on the screen.

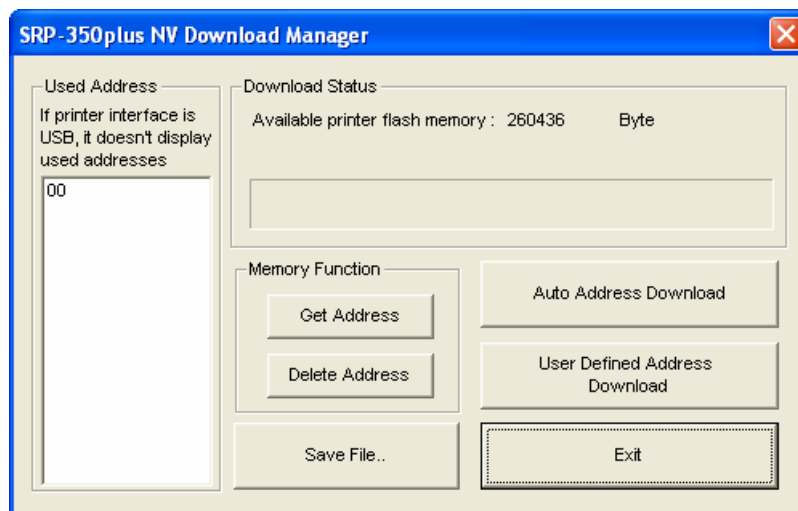




### 4-5-3 Download the color image in thermal printer

- \* In the printer selection section of paragraph 4.2, when selecting between the SRP-350plus, SRP-350plusF, SRP-352plus, SRP-370, SRP-372, the color image download mode is entered.
- \* The Color image download command uses the macro command “GS 8 L”.  
For further details, please refer to the commands manual of the corresponding model.

A special image address can be defined for downloading. Press the “Auto Address Download” button of separate address definition is not required. After downloading, the “Get Address” button can be used to recall the address value for the image stored on the current printer.

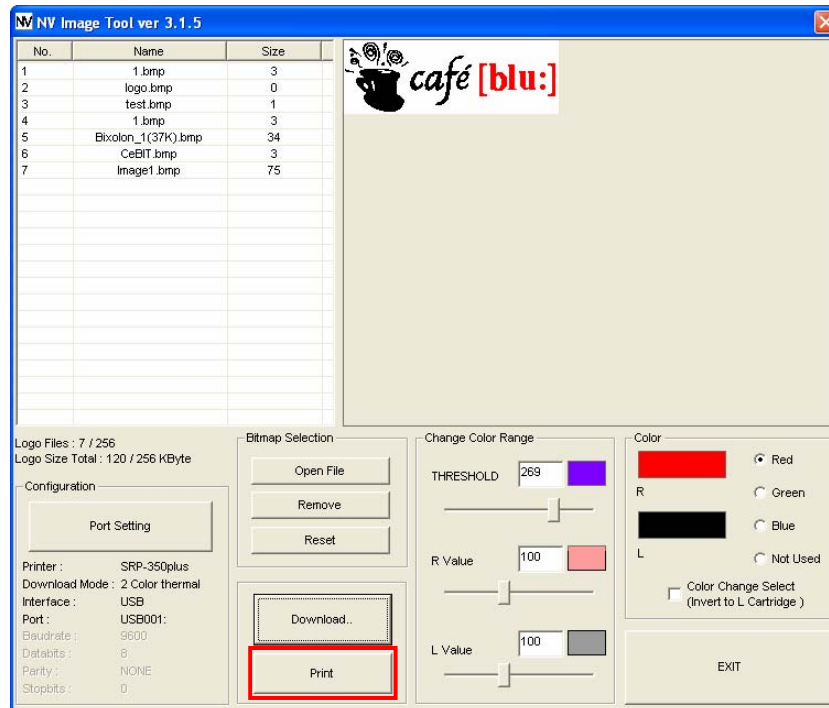


### 4-6 Save Print File

The “Save File” button shown in each download prompt window can be used to save in a computer file format.

## 4-7 Print the image

The “Print” button in the main screen can be used on each printer model to print and test a stored image.

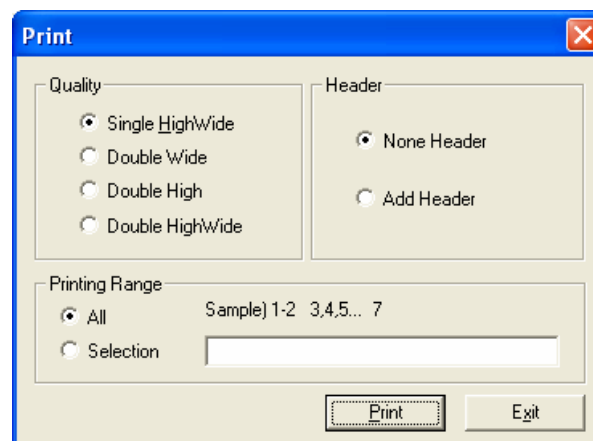


### 4-7-1 Print the mono image in thermal printer

\* In the printer selection section of paragraph 4.2, when selecting between the STP-103, STP-131, SRP-350, SRP-350N, SRP-350plus Mono, SRP-350plusF Mono, SRP-352plus Mono, SRP-370 Mono, SRP-372 Mono, the Mono image download mode is entered.

\* Mono image download command uses the macro command “FS q”. For further details, please refer to the commands manual of the corresponding model.

Configuration of expansion options and the selection of the number of the image to be printed can be done when printing.



### 4-7-2 Print the image in dot printer

\* In the printer selection section of paragraph 4.2, when selecting between the SRP-275 and SRP-500, the Dot Printer image download mode is entered.

\* The Dot Printer image download command uses the macro command “ESC g”.  
For further details, please refer to the commands manual of the corresponding model.

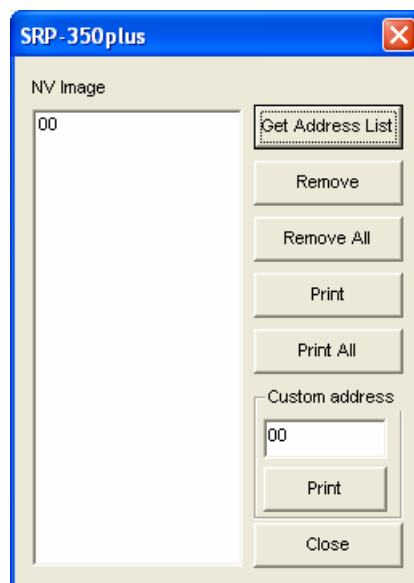
All stored images are printed.

### 4-7-3 Print the color image in thermal printer

\* In the printer selection section of paragraph 4.2, when selecting between the SRP-350plus, SRP-350plusF, SRP-352plus, SRP-370, SRP-372, the color image download mode is entered.

\* The Color image download command uses the macro command “GS ( L”.  
For further details, please refer to the commands manual of the corresponding model.

After selecting the address of the image to print following the recall of the addresses of all currently stored images, press the “Print” button to print.



**Appendix A. Release History**

<b>Version</b>	<b>Description</b>	<b>Release Date</b>	<b>Etc.</b>
2.0	1 <sup>st</sup> Release Version UI Updated(Easy control)	Dec. 1. 2003	
2.1	2bit Bitmap Image antagonistic color Bug	Dec 27. 2003	
2.2	Image Conversion Values Updated File Size Limit Updated File Open Bug	Feb 27. 2004	
2.3	Add "Save Print File" Menu	Oct 11. 2004	
3.1	Add Model Type (SRP-275, SRP-500, SRP-370) Updated Image Change Algorism	Nov 16. 2004	
3.2	Updated resolution (SRP-275, SRP-500)	Nov 19. 2004	
3.3 beta	Updated Serial Interface : Supported Baudrate	Nov 21. 2004	
3.4 beta	Updated Serial (read routine for SRP-370)	Dec 26. 2004	
3.5	Updated Parallel Interface Added SRP-372 model Updated USB Interface	Jan 6. 2005	
3.6	Updated Display UI	Jan 31. 2005	
3.7	Updated SRP-370,372 mono color supported (select model SRP-350) Updated SRP-770(version : receipt only) download (select model SRP-350) Add Error Message	Mar 15. 2005	
3.8	Updated color conversion routine Added "Download progress bar" for SRP-370 Updated Image list management	May 16, 2005	
3.0.9	Updated Image list process Updated Manual Updated Version management(ISO 9001)	Sep 21. 2005	
3.1.0	Updated PrinterModel (SRP-350 plus, SRP-770 receipt) Updated Select Code Mode (2 color, mono color) : SRP-370, 372, 350 plus Updated Manual	Oct 20. 2005	
3.1.1	Updated download function Updated Ethernet download Updated Manual Updated User Interface	May 2. 2006	
3.1.2	Updated "remove" function Updated 2 color image printing Added SRP-350plusMono	Oct 23. 2006	
3.1.2a	Updated Image addressing Updated USB download routine	Dec 15. 2006	
3.1.3	Added SRP-350N Integrated NV Image Tool of The Entire Model	Mar 13. 2007	
3.1.4	Added SRP-352plus Update download function Update Image list management	Apr 9. 2007	